



Title Plan - LT 499509

Survey Number LT 499509
Surveyor Reference E18723 Rosemerryn Stage 10
Surveyor Theresa Nell Cole-Swami
Survey Firm Davie Lovell-Smith Ltd
Surveyor Declaration I Theresa Nell Cole-Swami, being a licensed cadastral surveyor, certify that:
(a) this dataset provided by me and its related survey are accurate, correct and in accordance with the Cadastral Survey Act 2002 and the Rules for Cadastral Survey 2010, and
(b) the survey was undertaken by me or under my personal direction.
Declared on 07 Jul 2016 04:50 PM

Survey Details

Dataset Description Lots 266 to 290, 363 to 371, 703 and 814 being subdivision of Lot 703 DP 487176
Status Approved as to Survey
Land District Canterbury **Survey Class** Class A
Submitted Date 07/07/2016 **Survey Approval Date** 18/07/2016
Deposit Date

Territorial Authorities

Selwyn District

Comprised In

CT 696599

Created Parcels

Parcels	Parcel Intent	Area	CT Reference
Lot 266 Deposited Plan 499509	Fee Simple Title	0.0474 Ha	741384
Lot 267 Deposited Plan 499509	Fee Simple Title	0.0440 Ha	741385
Lot 268 Deposited Plan 499509	Fee Simple Title	0.0440 Ha	741386
Lot 269 Deposited Plan 499509	Fee Simple Title	0.0440 Ha	741387
Lot 270 Deposited Plan 499509	Fee Simple Title	0.0440 Ha	741388
Lot 271 Deposited Plan 499509	Fee Simple Title	0.0440 Ha	741389
Lot 272 Deposited Plan 499509	Fee Simple Title	0.0440 Ha	741390
Lot 273 Deposited Plan 499509	Fee Simple Title	0.0440 Ha	741391
Lot 274 Deposited Plan 499509	Fee Simple Title	0.0601 Ha	741392
Lot 275 Deposited Plan 499509	Fee Simple Title	0.0564 Ha	741393
Lot 276 Deposited Plan 499509	Fee Simple Title	0.0601 Ha	741394
Lot 277 Deposited Plan 499509	Fee Simple Title	0.0601 Ha	741395
Lot 278 Deposited Plan 499509	Fee Simple Title	0.0601 Ha	741396
Lot 279 Deposited Plan 499509	Fee Simple Title	0.0601 Ha	741397
Lot 280 Deposited Plan 499509	Fee Simple Title	0.0628 Ha	741398
Lot 281 Deposited Plan 499509	Fee Simple Title	0.1039 Ha	741399
Lot 282 Deposited Plan 499509	Fee Simple Title	0.1000 Ha	741400
Lot 283 Deposited Plan 499509	Fee Simple Title	0.1000 Ha	741401
Lot 284 Deposited Plan 499509	Fee Simple Title	0.1024 Ha	741402
Lot 285 Deposited Plan 499509	Fee Simple Title	0.1094 Ha	741403



Title Plan - LT 499509

Created Parcels

Parcels	Parcel Intent	Area	CT Reference
Lot 286 Deposited Plan 499509	Fee Simple Title	0.1093 Ha	741404
Lot 287 Deposited Plan 499509	Fee Simple Title	0.1024 Ha	741405
Lot 288 Deposited Plan 499509	Fee Simple Title	0.1000 Ha	741406
Lot 289 Deposited Plan 499509	Fee Simple Title	0.1000 Ha	741407
Lot 290 Deposited Plan 499509	Fee Simple Title	0.1038 Ha	741408
Lot 363 Deposited Plan 499509	Fee Simple Title	0.0627 Ha	741409
Lot 364 Deposited Plan 499509	Fee Simple Title	0.0615 Ha	741410
Lot 365 Deposited Plan 499509	Fee Simple Title	0.0601 Ha	741411
Lot 366 Deposited Plan 499509	Fee Simple Title	0.0638 Ha	741412
Lot 367 Deposited Plan 499509	Fee Simple Title	0.0574 Ha	741413
Lot 368 Deposited Plan 499509	Fee Simple Title	0.0556 Ha	741414
Lot 369 Deposited Plan 499509	Fee Simple Title	0.0551 Ha	741415
Lot 370 Deposited Plan 499509	Fee Simple Title	0.0436 Ha	741416
Lot 371 Deposited Plan 499509	Fee Simple Title	0.0429 Ha	741417
Lot 703 Deposited Plan 499509	Fee Simple Title	66.2737 Ha	741418
Lot 814 Deposited Plan 499509	Vesting on Deposit for Road	0.8224 Ha	
Area O Deposited Plan 499509	Easement		
Area P Deposited Plan 499509	Easement		
Area Q Deposited Plan 499509	Easement		
Total Area		<hr/> 69.4051 Ha	

Schedule / Memorandum



DAVIE LOVELL·SMITH

PLANNING SURVEYING ENGINEERING

Davie, Lovell-Smith Ltd
116 Wrights Road,
PO Box 679, Christchurch 1,
New Zealand
Telephone (03) 379-0793,
E-mail: office@dls.co.nz

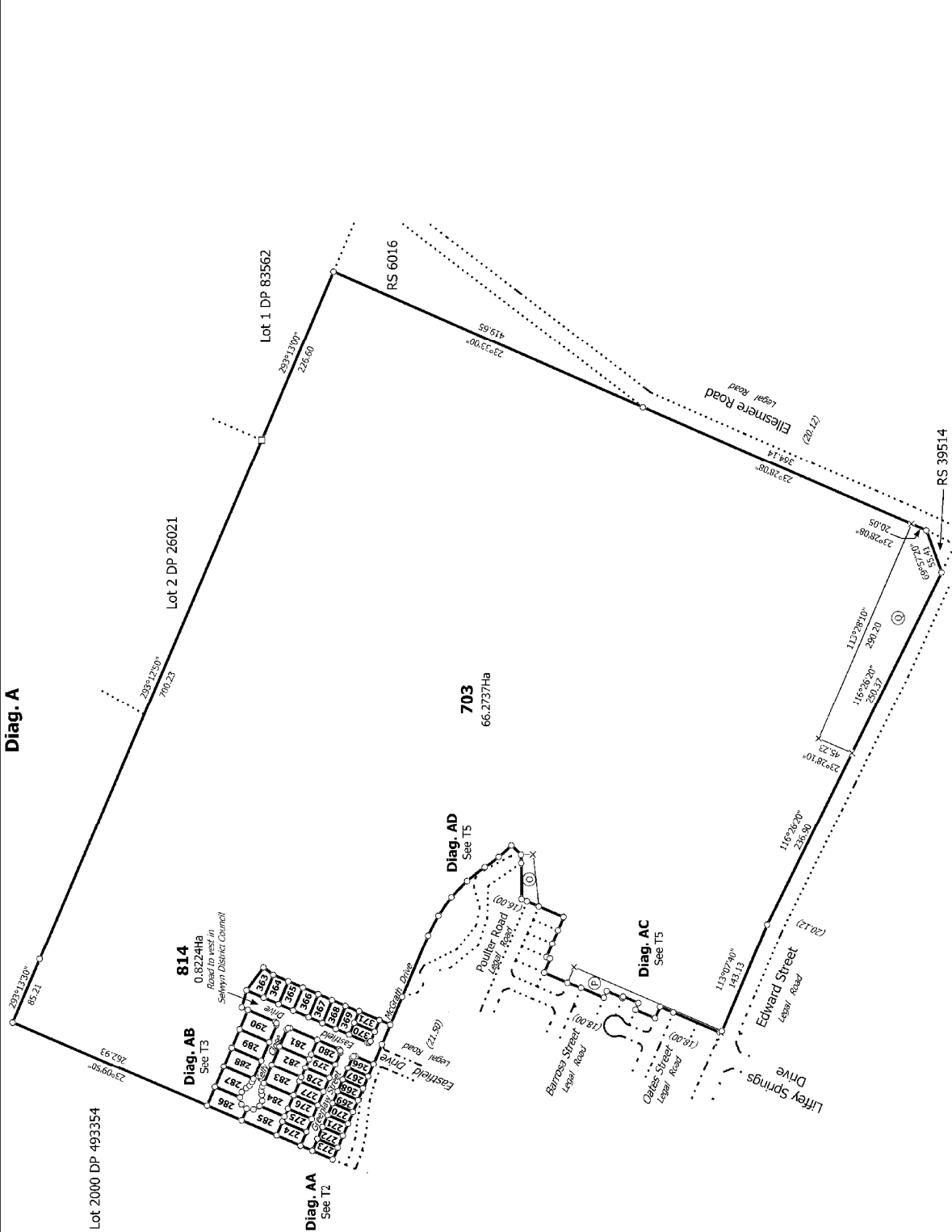
Our Ref: E18723

D.P.499509

SCHEDULE OF EXISTING EASEMENTS

Purpose	Servient Tenement	Shown	Document
Right to drain water in gross.	Lot 703	O & Q	EI 9370643.10
	Lot 703	P	EI 9672810.8

Diag. A



E18/23
RC155262 & RC165158

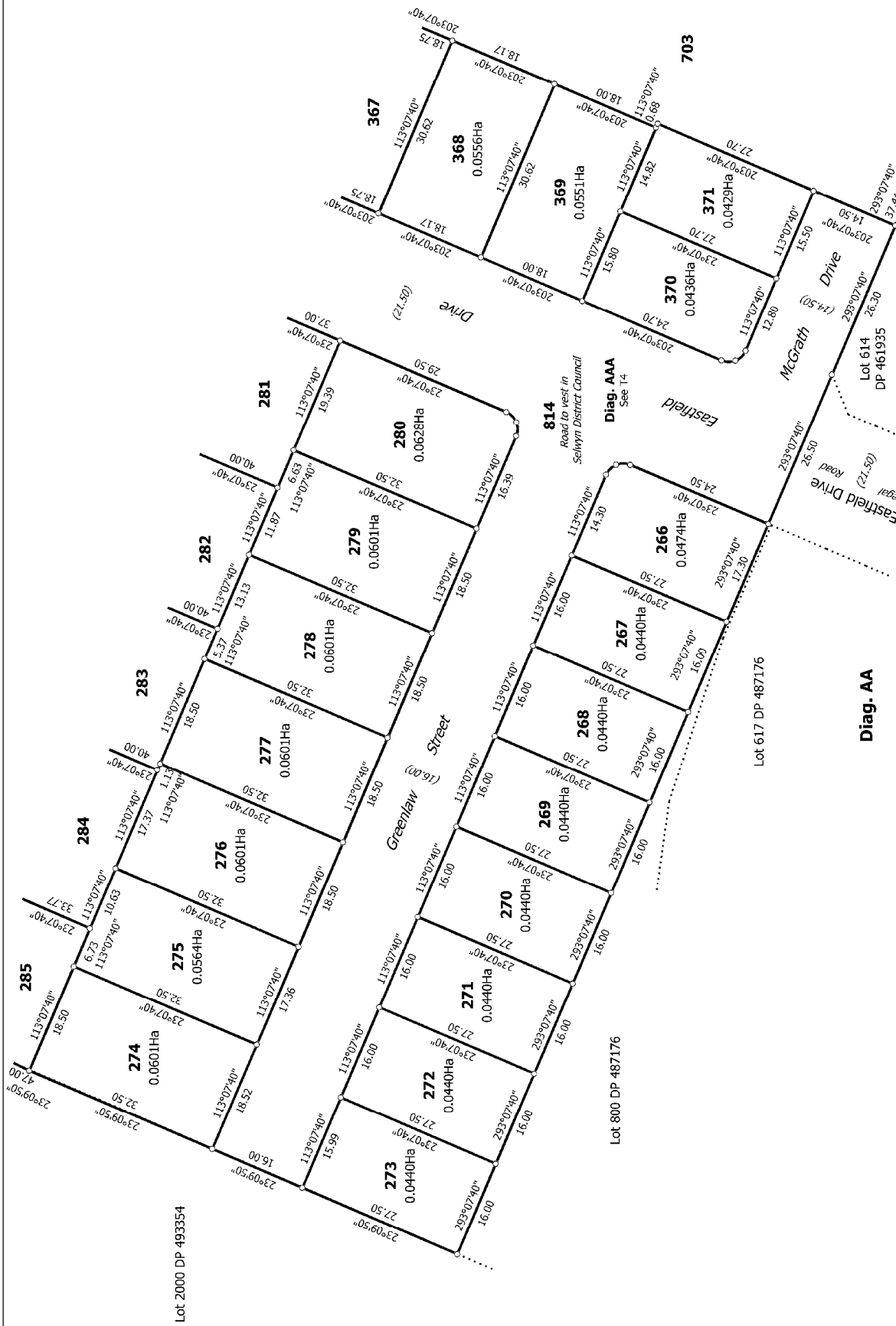
T 1/5

Land District: Canterbury

Lots 266 to 290, 363 to 371, 703 and 814 being subdivision of Lot 703 DP 487176

Surveyor: Theresa Nell Cole-Swami
Firm: Dawie Lovell-Smith Ltd

Title Plan
LT 499509
Approved on: 18/07/2016



T 2/5

Land District: Canterbury

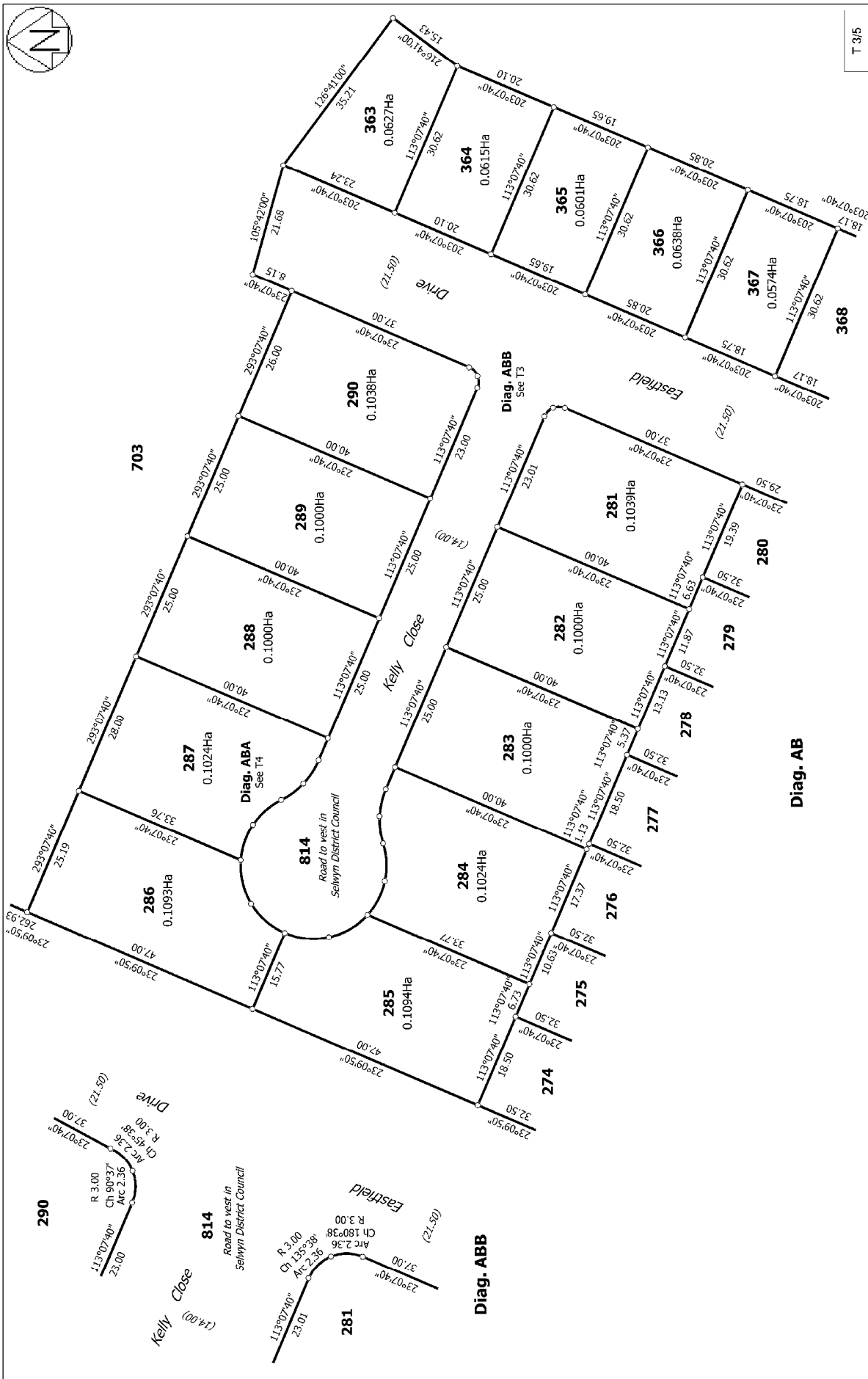
Digitally Generated Plan

Generated on: 18/07/2016 12:38am Page 5 of 8

Lots 266 to 290, 363 to 371, 703 and 814 being subdivision of Lot 703 DP 487176

Surveyor: Theresa Nell Cole-Swami
Firm: Dawie Lovell-Smith Ltd

Title Plan
LT 499509
Approved on: 18/07/2016



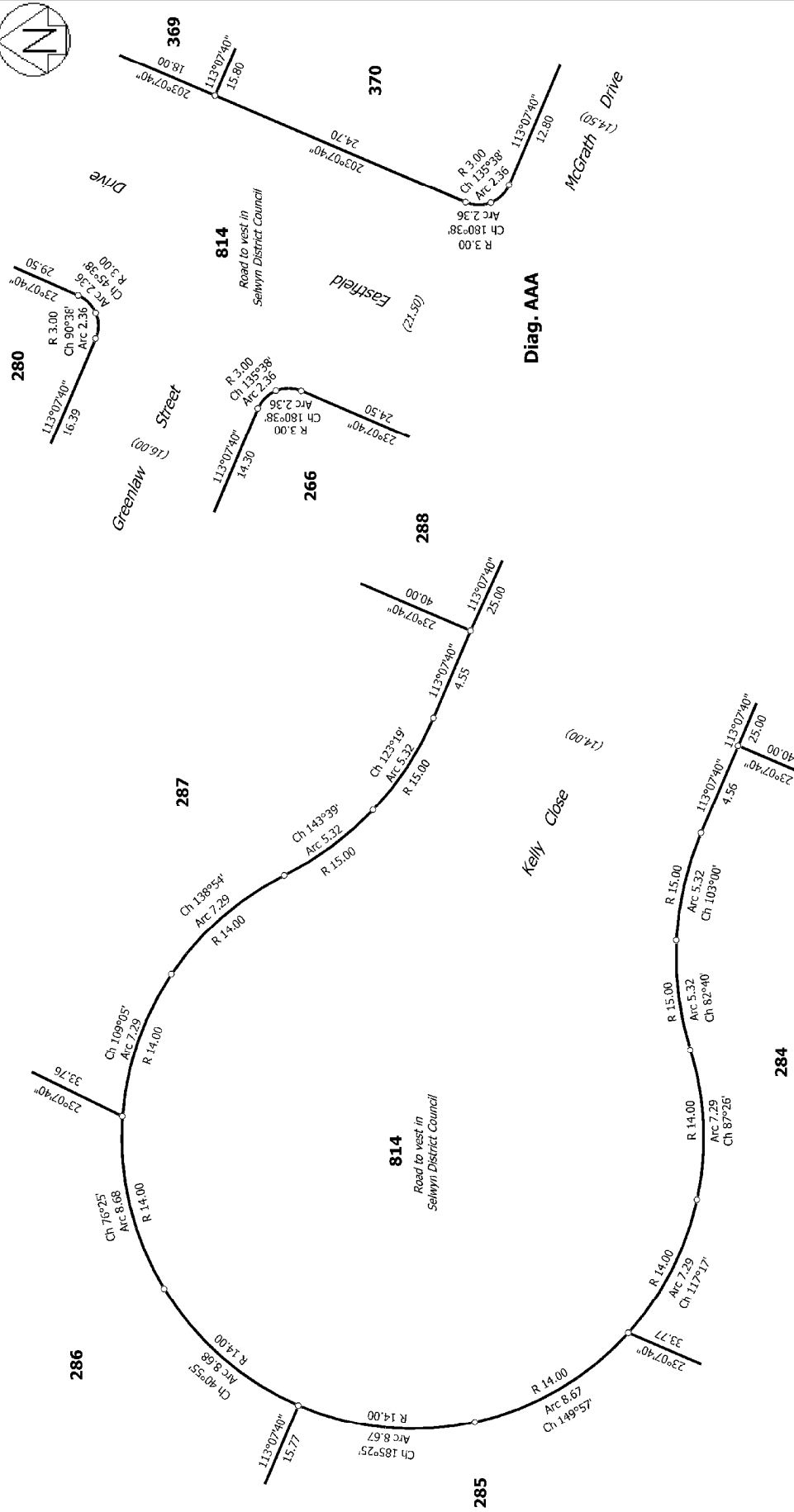
T 3/5

Land District: Canterbury
Digitally Generated Plan
Generated on: 18/07/2016 12:38am Page 6 of 8

Surveyor: Theresa Nell Cole-Swami
Firm: Dawie Lovell-Smith Ltd

Title Plan
LT 499509
Approved on: 18/07/2016

Lots 266 to 290, 363 to 371, 703 and 814 being subdivision of Lot 703 DP 487176



Diag. AAA

Diag. ABA

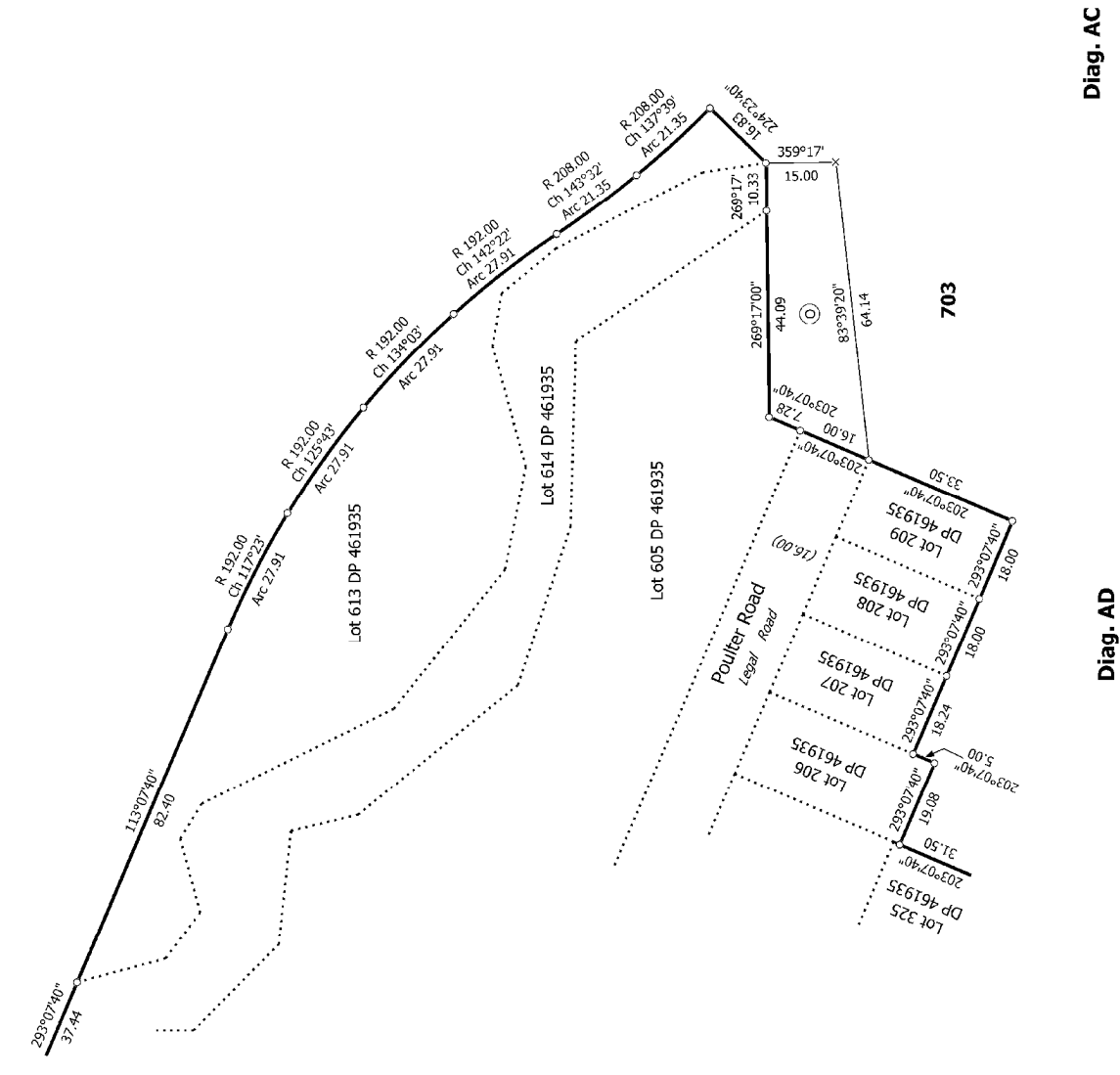
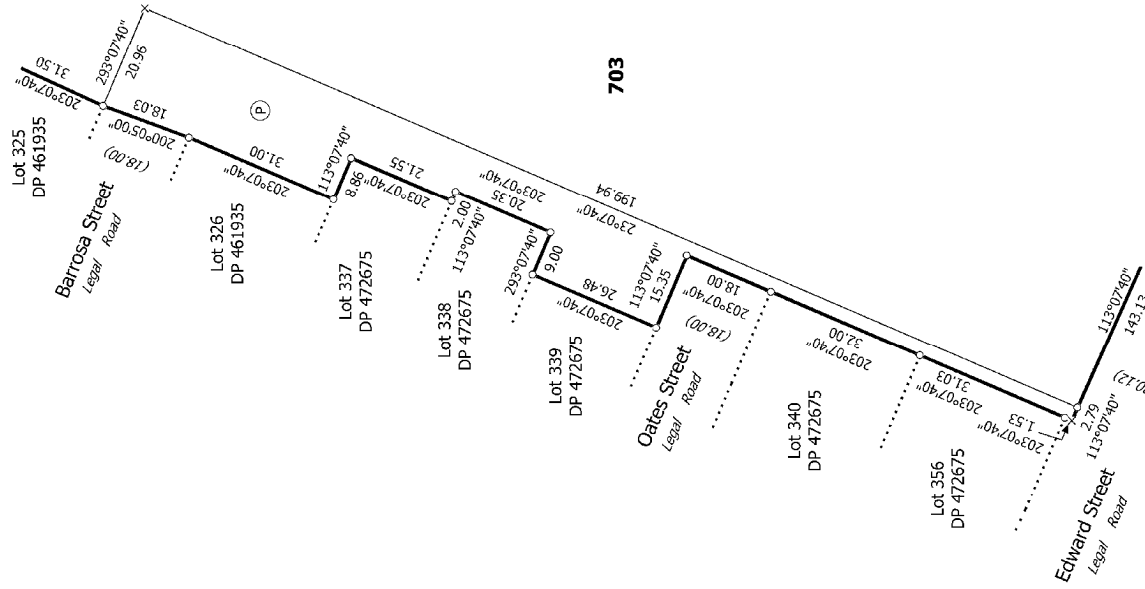
T 4/5

Land District: Canterbury
 Digitally Generated Plan
 Generated on: 18/07/2016 12:38:59 Page 7 of 8

Surveyor: Theresa Nell Cole-Swami
 Firm: Davie Lovell-Smith Ltd

Title Plan
 LT 499509
 Approved on: 18/07/2016

Lots 266 to 290, 363 to 371, 703 and 814 being subdivision of Lot 703 DP 487176



T 5/5

Land District: Canterbury
 Digitally Generated Plan
 Generated on: 18/07/2016 12:38:58 PM Page 6 of 8

Surveyor: Theresa Nell Cole-Swami
 Firm: Dawie Lovell-Smith Ltd

Diag. AD
 Lots 266 to 290, 363 to 371, 703 and 814 being subdivision of Lot 703 DP 487176

Diag. AC
 Title Plan
 LT 499509
 Approved on: 18/07/2016